

PROMOTION



RÖHM STEEL ICONS 2017-1

Valid until 31 March 2017

RÖHM
driven by technology

SPIRO-SK, with safety device



APPLICATION

Especially suitable on machine tools, box column drills and drilling machines with high precision requirements.

TYPE

Self-clamping flat jaw drill chuck with metal sleeve and safety device. Industrial design with maximum precision.

CUSTOMER BENEFITS

- ③ Highest concentricity of up to 0.07 mm over the whole clamping range
- ③ Increase in the clamping force proportional to the cutting force by the automatic reclamping function
- ③ Conical mount for maximum driving force and precision

TECHNICAL FEATURES

- The locking of the safety catch prevents the unintentional release in counterclockwise rotation up to a turning moment of 15 Nm
- All wear parts are hardened and ground



A03
SPIRO-SK for machine tools, box column drills and drilling machines



Item no.	Size	Type	Clamping capacity mm	Mount	Concentricity deviation max. mm	External Ø mm	Length opened mm	Length closed mm	Weight g	Promotion Price
871070	10	SK	0-10	B 16	0.07	43	81	88.5	670	159.00 USD
871071	13 S	SK	1-13	B 16	0.07	43	92	100.3	1050	171.00 USD

DID YOU KNOW THAT

... RÖHM is one of the few companies producing drill chucks in Europe

... RÖHM counts all renowned manufacturer of electric tools as its customers

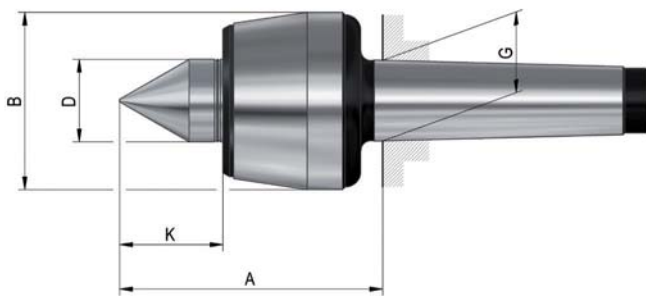
... RÖHM has over 100 years of experience in drill chuck production

... RÖHM covers a clamping range from 0-26 mm with its comprehensive drill chuck range

... RÖHM produces drill chucks in all common mounts

... RÖHM produces and covers a comprehensive product range from key-type drill chucks to quick-action drill chucks and self-clamping flat jaw drill chucks

Pro - standard design



APPLICATION

For counter-clamping workpieces on turning and grinding machines.

TYPE

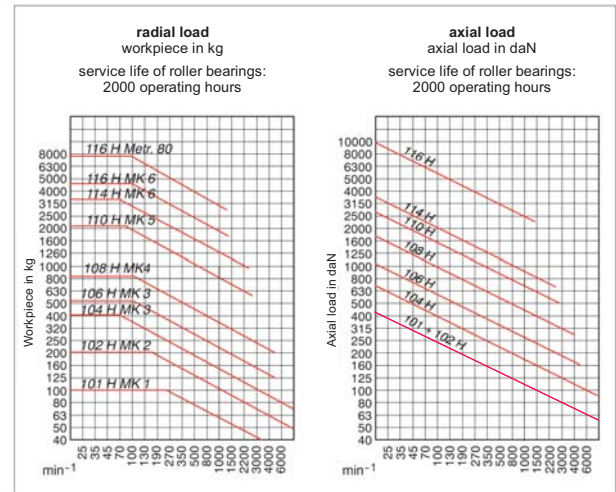
All-round live centre in classical design for nearly any standard clamping situation.

CUSTOMER BENEFITS

- ⊕ Proven 3-fold bearing for high axial and radial load
- ⊕ Lifetime lubrication for minimum required maintenance
- ⊕ Maximum concentricity deviation of 0.005 mm for maximum precision

TECHNICAL FEATURES-

- Body hardened and ground (MT 1 - Metr. 80)
- Tip angle 60°



A06
H Pro, body hardened and ground - tip angle 60°

Item No.	061740 ¹⁾	043400	043115	042315	042776	042175	042843	043532	093439	093440
Promotion Price	188.00 USD	188.00 USD	188.00 USD	195.00 USD	228.00 USD	261.00 USD	378.00 USD	756.00 USD	1,462.00 USD	1,895.00 USD
Mount MT	0	1	2	3	3	4	5	6	6	Metr. 80
Size	100	101	102	104	106	108	110	114	116	116
A mm	44	60.5	65	70.5	79.5	102.5	129	152	196	196
B mm	25	34.5	43	48.5	58.5	68.5	88,5	102.5	138.5	138.5
D mm	10	15	20	22	25	32	40	50	60	60
G mm	9.045	12.065	17.78	23.825	23.825	31.267	44.399	63.348	63.348	80
K mm	11	17	24	27	30.5	40	49.5	57	66	66
Weight approx. g	200	400	500	800	1300	2300	4700	10200	17800	23000
Workpiece weight max. kg	10	100	200	400	500	800	2000	3500	5000	7500
Concentricity deviation max. mm	0.01	0.005	0.005	0.005	0.005	0.005	0,005	0.008	0.01	0.015
Speed max. min ⁻¹	15000	7000	7000	6300	5000	3800	3000	2600	1500	1500
Spare live centres	1241727	1241726	1241725	1241724	1241723	1241722	1241721	1241728	1241729	1241730

1) body only ground not hardened

CoA - product ranges

Constant face drivers
CoA



APPLICATION

For the rational turning of workpieces on its entire length without reclamping with max. precision.

TYPE

Basic body with morse taper and hydraulic pressure compensation. Clamping circuit Ø 8-80 mm. Workpiece weight max. 100 kg.

CUSTOMER BENEFITS

- ☺ Constant clamping force thanks to hydraulic pressure compensation, even for uneven workpiece faces
- ☺ Stable and constant workpiece length stop on the front side thanks to resilient centre point
- ☺ Maximum concentricity of up to 0.015 mm
- ☺ Maximum flexibility thanks to universal exchange of driving disc and centre point

TECHNICAL FEATURES

- Guide value for axially permissible total load on 3 support pistons: 20.000 N

A14

Small assortment in wooden box, hydraulic pressure compensation, clamping dia. 12-50 mm, turning range 13-100 mm



Item no.	MT	Right-hand rotation	Left-hand rotation	With draw-off nut.	Weight approx. g	Promotion Price
088501	3	•			3900	932.00 USD
088511	3	•		•	4200	1,088.00 USD
088521	3		•		3900	932.00 USD
088531	3		•	•	4200	1,088.00 USD
088502	4	•			4300	954.00 USD
088512	4	•		•	4600	1,112.00 USD
088522	4		•		4300	953.00 USD
088532	4		•	•	4600	1,112.00 USD
088503	5	•			4900	998.00 USD
088513	5	•		•	5200	1,165.00 USD
088523	5		•		4900	998.00 USD
088533	5		•	•	5200	1,165.00 USD
088504	6	•			6600	1,154.00 USD
088514	6	•		•	6800	1,299.00 USD
088524	6		•		6600	1,154.00 USD
088534	6		•	•	6800	1,299.00 USD

Delivery includes:

- Basic body
- Driving discs clamping circuit (S) 12 / 20 / 32 / 50
- Centres-Ø (Y) 6 / 12

A14

Large assortment in wooden box, hydraulic pressure compensation, clamping dia. 10-80 mm, turning range 11-160 mm



Item no.	MT	Right-hand rotation	Left-hand rotation	With draw-off nut.	Weight approx. g	Promotion Price
088218	3	•			5600	1,780.00 USD
088223	3		•		5600	1,780.00 USD
088233	3	•		•	5900	1,936.00 USD
088238	3		•	•	5900	1,936.00 USD
088219	4	•			6000	1,799.00 USD
088224	4		•		6000	1,799.00 USD
088234	4	•		•	6300	1,957.00 USD
088239	4		•	•	6300	1,957.00 USD
088220	5	•			6600	1,859.00 USD
088225	5		•		6600	1,859.00 USD
088235	5	•		•	6900	1,999.00 USD
088240	5		•	•	6900	1,999.00 USD
088221	6	•			8300	1,998.00 USD
088226	6		•		8300	1,998.00 USD
088236	6	•		•	8500	2,153.00 USD
088241	6		•	•	8500	2,153.00 USD

Delivery includes:

- Basic body
- Driving discs clamping circuit (S) 10 / 12 / 16 / 20 / 25 / 32 / 40 / 50 / 63 / 80
- Centres-Ø (Y) 4 / 6 / 10 / 12 / 16

DURO-TA XT



APPLICATION

On turning and milling machines.

TYPE

Key bar chuck (DURO-TA) with removable guideways.

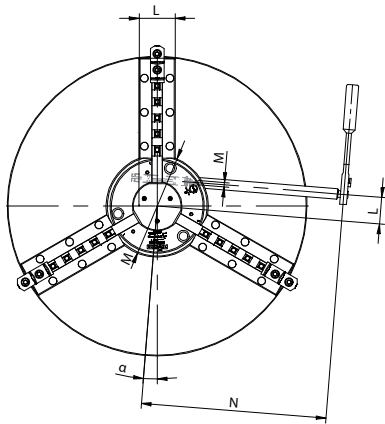
CUSTOMER BENEFITS

- ⊕ Weight reduction by up to 75 %
- ⊕ Maximum flexibility and faster conversion
- ⊕ Innovative design with minimum interference contour and maximum stability

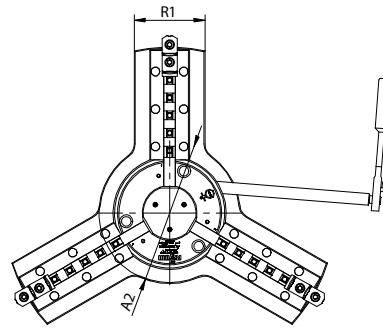
TECHNICAL FEATURES

- Weight reduction by up to 75 % allows maximum utilization of the machine potential and the clamping of heavier workpieces
- Flexible clamping range thanks to elongated guideways for faster conversion between large and small workpieces
- Easy dismounting of the guideways for clamping smaller workpieces
- Minimum interference contour and better workpiece accessibility thanks to compact design and a reduced design height by up to 78 %
- High stability thanks to direct support of the permanently screwed guideways

Key bar chuck
DURO-TA XT



full base plate



max. lightweight base plate

A08

DURO-TA XT key bar chuck, with complete base plate

Item no.	Size	Clamping range external with extended jaws mm	Clamping range external with standard jaws * mm	Interfering contour ** mm	Jaw travel mm	Weight kg	Speed max. min ⁻¹	Max. Torque Nm	Max. total clamping force kN	Weight reduction compared to a standard chuck %	Promotion Price
180312	750 (250)	145-715	8-253	804 / 769	8	183	800	190	185	75	18,991.00 USD
180313	1000 (315)	220-995	12-323	1082 / 1014	10.2	365	570	210	190	68	29,226.00 USD
180314 ▲	1250 (500)	220-1190	40-501	1305	12.5	640	570	320	290	65	35,133.00 USD

Customized adaptations of the base plate for further weight reduction on the machine table on request

* By disassembling of the stripping cap and use of standard reversible jaws

** By shortening of the base jaws. Please consider shorter clamping ranges

Further sizes and mountings available on request

ZS



APPLICATION

Proven rotary chuck for use in areas requiring high clamping forces, high concentricity as well as reliable long-term repeatability. For universal use on lathes, rotary tables, dividing units, etc.

TYPE

Geared scroll chucks in steel design.

CUSTOMER BENEFITS

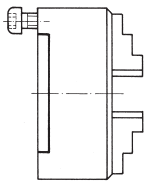
- ③ High clamping force
- ③ Special flat design with direct mounting
- ③ The jaws can be adjusted over the entire clamping range by turning the key. This allows workpieces with different clamping diameters to be quickly clamped
- ③ Jaws in chuck ground out for concentricity

TECHNICAL FEATURES

- With one-piece jaws or with base and top jaws
- Steel body and spiral ring die-forged
- Series-balanced and hardened

Geared scroll chucks
ZS

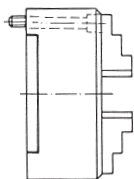
A09
DIN 6350, cylindrical centre mount, form A



Size	Cylindrical centre mount	Through-hole mm	3-jaw chuck with inside and outside jaw	Promotion Price	4-jaw chuck with inside and outside jaw	Promotion Price	Speed max. min ⁻¹	Torque Nm	Total clamping force kN
80	56	19	102513	385.00 USD	102505	450.00 USD	7000	30	13
100	70	20	101782	418.00 USD	102130	490.00 USD	6300	60	27
125	95	32	101672	521.00 USD	106075	612.00 USD	5500	80	31
160	125	42	100717	667.00 USD	101164	783.00 USD	4600	110	47
200	160	55	100186	875.00 USD	100466	1,026.00 USD	4000	140	55
250	200	76	100533	1,146.00 USD	101030	1,349.00 USD	3000	150	63
315	260	103	101344	1,706.00 USD	101598	1,999.00 USD	2300	180	69
400	330	136	102062	3,341.00 USD	102330	3,917.00 USD	1800	240	92
500	420	190	102555	5,210.00 USD	103340	6,225.00 USD	1300	260	100
630	545	240	102720	7,850.00 USD	102856	9,332.00 USD	850	280	105
800	710	380	104913	15,325.00 USD	104917	17,999.00 USD	700	300	110
1000	910	460	104925	24,195.00 USD	104929	28,800.00 USD	560	450	115
1250	910	550	104941	34,560.00 USD	104945	41,475.00 USD	450	450	115

Further sizes and mountings available on request

A09
Mounting from front, DIN 6350, cylindrical centre mount



Size	Cylindrical centre mount	Through-hole mm	3-jaw chuck with inside and outside jaw	Promotion Price	4-jaw chuck with inside and outside jaw	Promotion Price	Speed max. min ⁻¹	Torque Nm	Total clamping force kN
125	95	32	120155	520.00 USD	124447	612.00 USD	5500	80	31
160	125	42	115568	667.00 USD	125802	782.00 USD	4600	110	47
200	160	55	113158	875.00 USD	113160	1,021.00 USD	4000	140	55
250	200	76	114304	1,146.00 USD	114306	1,350.00 USD	3000	150	63
315	260	103	120270	1,706.00 USD	129946	1,999.00 USD	2300	180	69
400	330	136	123475 ▲	3,341.00 USD	134401 ▲	3,918.00 USD	1800	240	92
500	420	190	127616 ▲	5,207.00 USD	123465 ▲	6,222.00 USD	1300	260	100
630	545	240	128545 ▲	7,950.00 USD	135061 ▲	9,332.00 USD	850	280	105

Further sizes and mountings available on request

RZM



APPLICATION

Optimized for 5-axis machining.

TYPE

Clamping system mechanical without power transmitter, manually operated. Centric clamping with two moving jaws.

CUSTOMER BENEFITS

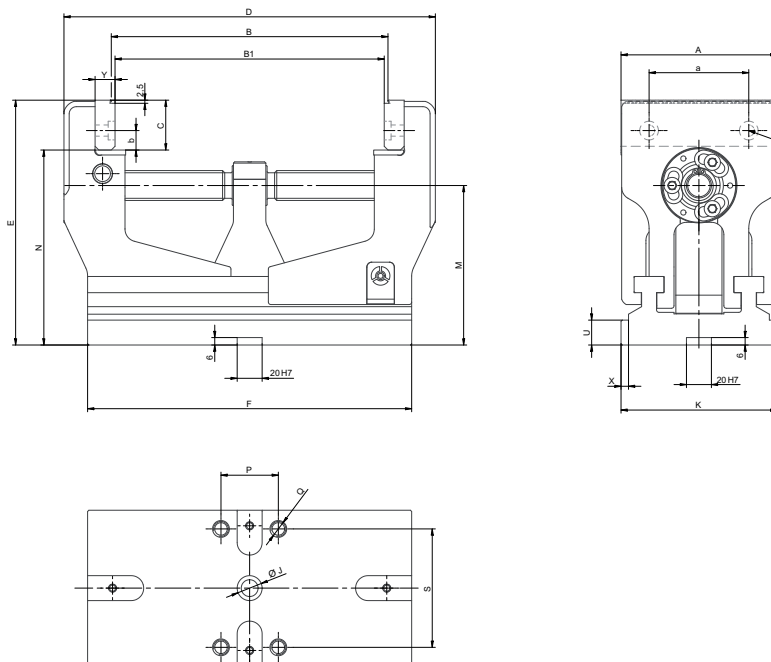
- ⊕ Ideal guidance characteristics of the jaws thanks to patented guidance system
- ⊕ Very large clamping stroke
- ⊕ Open design for optimized chip flow, which permits easy cleaning, after heavy duty machining
- ⊕ Constant clamping force for every clamping operation and high clamping repeatability when a torque wrench is used
- ⊕ Optimally suitable for use of SKB clawed jaws. These top jaws can securely clamp raw and sawed parts with a max. strength of up to 900 N/mm² to a cutting depth of 2.5 mm

TECHNICAL FEATURES

- Steel body hardened and ground
- Highly positioned clamping jaw
- Top spindle lying near the clamping jaws for optimal force transfer
- Long jaw guide and compact design
- Including SKB clawed jaws
- Clamping repeatability 0.02 mm

A32
RZM

Item No.	178910	178911
Promotion Price	2,339.00 USD	2,180.00 USD
Jaw width A mm	125	125
Design	long design	short design
B min.	23	23
B max.	222	142
B1 mm	17-216	17-136
C mm	128	128
D mm	298	218
E mm	196,5	196,5
F mm	260	180
N mm	156,5	156,5
U mm	20	20
X mm	6	6
Clamping force kN	25	25
Tightening torque Nm	150	150
Weight kg	20.3	17.4



RB-K



APPLICATION

For universal use on milling machines and machining centers.

TYPE

Manual clamping system with power amplifier.

CUSTOMER BENEFITS

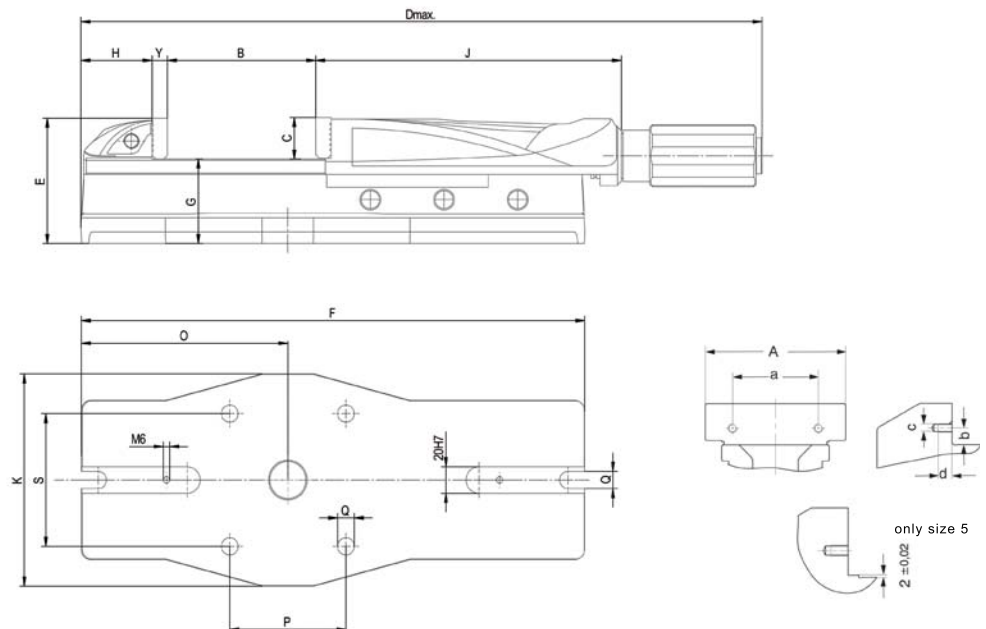
- ② Stepped clamping force presetting
- ② High precision thanks to precise jaw guides
- ② Fast clamping range adjustment via bolt system
- ② Optimal coolant and chip drain
- ② High wear-resistance thanks to hardened jaw guides
- ② Use without force amplification possible for sensitive clamping

TECHNICAL FEATURES

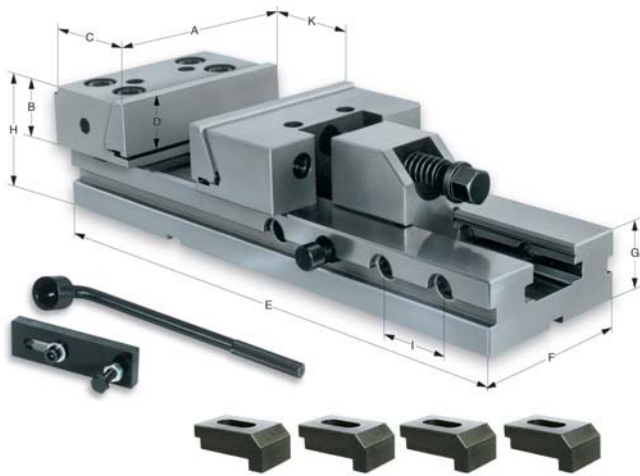
- Base with grooves for exact fixation on the machine table
- Use on rotary plate with graduation
- Set-up option with clamping claws
- Encapsulated spindle

A10
RB-K, with SGN normal jaws and hand crank

Item no.	179075	179076	179077	179078	179079
Promotion Price	1,300.00 USD	1,399.00 USD	1,735.00 USD	2,170.00 USD	2,930.00 USD
Size	1	2	3	4	5
Jaw width A mm	92	113	135	160	200
Clamping capacity B mm	100	170	220	310	350
C mm	31.6	31.6	39.6	49,6	66.6
D mm	490	583	679	817	1022
E mm	91	97	112	133	171
F mm	310	390	468	574	685
G±0.02 mm	59	65,5	72.5	83.5	104.5
H mm	50	55	70	80	90
J mm	218	236.5	262	298	375
K mm	160	160	200	240	280
O mm	115	160	180	220	230
P mm	90	90	90	90	160
Q mm	13	13	13	17	21
S mm	100	100	135	180	180
Y mm	12	12	16	16	20
a mm	63	63	80	100	140
b mm	13.6	13.6	15.6	19.6	23
c	M6	M6	M8	M8	M10
d mm	12	12	13	13	16
Clamping force kN	25	30	40	50	100
Weight kg	15.5	24	39	60	112



MSR



APPLICATION

For universal use on milling machines and machining centers.

TYPE

Clamping system mechanical without power transmitter, manually operated.

CUSTOMER BENEFITS

- ⊕ Optimal price/performance ratio
- ⊕ Fast clamping range adjustment via bolt system

TECHNICAL FEATURES

- Scope of delivery, complete with clamping wrench, workpiece stop and four clamping claws
- With draw-down jaws
- Hardened steel body (60 HRC)
- Clamping repeatability 0.02 mm

A11
MSR, with draw-down jaws

Item No.	Jaw width A mm	B mm	C mm	D mm	E mm	E max mm	F mm	G mm	H mm	I mm	K mm	Clamping force kN	Weight kg	Promotion Price
161828	125	40	78	32	345	401	95	40	80	50	150	30	12.7	550.00 USD
161827	150	50	90	40	420	487	125	50	100	50	200	50	25.6	650.00 USD
161826	150	50	90	40	520	587	125	50	100	50	300	50	29.5	815.00 USD
161825	175	60	97	43	655	701	145	58	118	50	400	60	51.2	1,139.00 USD

Machine vice and drilling machine vice

BSS



APPLICATION

For securely clamping workpieces on drills and measuring machines.

TYPE

Clamping system mechanical, manually operated.
Standard version.

CUSTOMER BENEFITS

- ⊕ **Quick-clamping vice**
- ⊕ For quick clamping and unclamping, particularly in the case of series workpiece machining
- ⊕ Optimal price/performance ratio
- ⊕ One-hand operation
- ⊕ Long guidance of moving jaw, even in the external clamping range
- ⊕ Clamping jaws are hardened and reversible, one side smooth and ground on both sides
- ⊕ Solid clamping jaw with one longitudinal prism and two transverse prisms
- ⊕ Both jaws with support surface for clamping flat workpieces

TECHNICAL FEATURES

- Body made out of special steel casting
- One-hand operation
- Positive locking

A12
BSS, with V-jaw and normal jaw SBO

Item no.	Size	Jaw width mm	Clamping capacity mm	Jaw height mm	Length mm	Height mm	Length body mm	Weight kg	Promotion Price
134158	2	110	130	32	510	72.5	315	9.5	569.00 USD
134159	3	135	160	40	587	80.5	365	13.5	634.00 USD

Delivered within
7 working days

KFD-HE

Incl. suitable draw tube adapter



The proven RÖHM KFD-HE power chucks with through-hole convince with long lifetime, high precision and reliability. Order now the power chuck KFD-HE with suitable draw tube adapter - delivered within 7 working days.

ORDER INFO

To order the suitable draw tube adapter with through-hole please send back the filled in draw tube adapter data sheet.

CUSTOMER BENEFITS

- ⊕ Large through-hole for hollow and partially hollow, bar and tube machining as well as for flange-type workpieces
- ⊕ Long-tested chuck principle for maximum service life
- ⊕ Sturdy chuck construction

SERRATION 90°: 3-jaw power chuck **KFD-HE**, cylindrical center mount, mounting dimensions to **DIN 6353**

Item No.	154384	154031	154032	154829
Promotion Price	2,491.00 USD	2,699.00 USD	3,368.00 USD	3,840.00 USD
Size	170	210	254	315
Jaw stroke B mm	3.2	4.3	5.1	5.3
C mm	82	93	101	114
DH6 / ZA mm	140 / 3 x M 10	170 / 3 x M 12	220 / 3 x M 16	300 / 3 x M 20
Wedge stroke K mm	14	16	19	23
Through-hole M mm	43	52	75	121
Q mm	M 52 x 1.5	M 58 x 1.5	M 82 x 1.5	M 126 x 1.5
Max. draw bar pull kN	25	40	60	60
Max. total clamping force approx. kN	75	110	135	160
Max. admissible speed min ⁻¹	6300	5000	4500	3500
Moment of inertia J kgm ²	0.038	0.09	0.22	0.8
Weight without jaws approx. kg	12	18	29	50

SERRATION 60°: 3-jaw power chuck **KFD-HE**, cylindrical mount, mounting dimensions to **DIN 6353**

Item no.	154390	154391	154392	154830
Promotion Price	2,699.00 USD	2,920.00 USD	3,635.00 USD	4,150.00 USD
Size	170	210	254	315
Jaw stroke B mm	3.4	4.3	5.1	5.3
C mm	82	93	101	114
DH6 / ZA mm	140 / 3 x M 10	170 / 3 x M 12	220 / 3 x M 16	300 / 3 x M 20
Wedge stroke K mm	14	16	19	23
Through-hole M mm	43	52	75	121
Q mm	Ø 20	Ø 30	Ø 45	Ø 60
Q max.	M 53 x 1.5	M 60 x 2	M 85 x 2	M 130 x 2
Max. draw bar pull kN	25	40	60	60
Max. total clamping force approx. kN	75	110	135	160
Max. admissible speed min ⁻¹	6300	5000	4500	3500
Moment of inertia J kgm ²	0.038	0.9	0.22	0.8
Weight without jaws approx. kg	12	18	29	50

Assortment MZE cartridge mandrel



Product ranges in wooden box size 1 - Item No. 315093

CONTENT

Consisting of 5 basic mandrels 02-06 and 7 clamping sleeves in the clamping range 12-26, Ø 12-14-16-18-20-22-24 mm

Promotion Price
1,525.00 USD



Product range in wooden box size 2 - Item No. 315094

CONTENT

Consisting of 3 basic mandrels 07-09 and 6 clamping sleeves in the clamping range 25-55, Ø 25-30-35-40-45-50 mm

Promotion Price
1,685.00 USD



RÖHM Products Mexico
México C.P. 64970
Office: (81) 9627 0686
info@rohms-products.com

RÖHM Products of America
Suwanee, GA 30024
Office: (770) 963 8440
office@rohms-products.com

