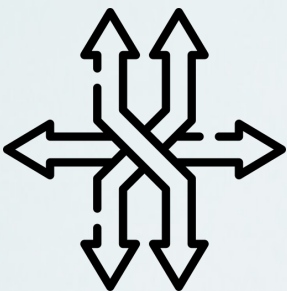
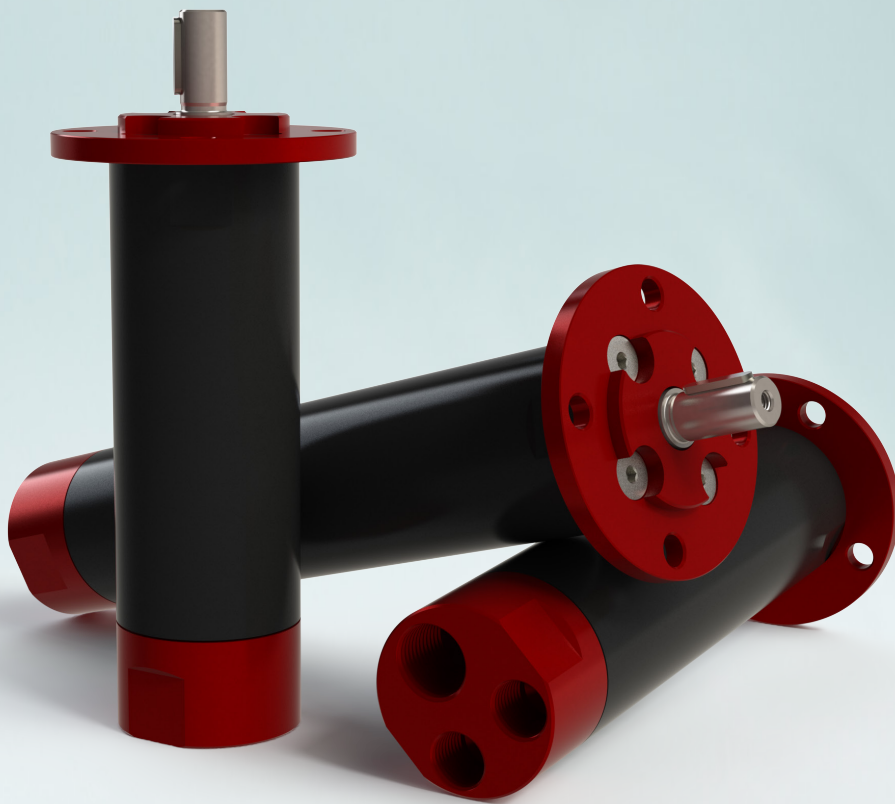


NEW

The **GLOBE Compact Vane Air Motor**

CVM10

0,67 HP



Versatile



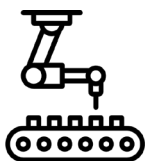
Powerful



Short Lead Times

globe-airmotors.com

INDUSTRIES



Factory Automation & Packaging Machinery

Every GLOBE air motor can be easily controlled by adjusting air supply pressure. The GLOBE Compact Vane Motor can be loaded, stopped and started until stall, without damage. This makes them an ideal tool for cap screwing on bottling lines for example.

- Stainless steel housing for sterile environments
- Food Graded Lubrication or lubrication free
- Multiple mounting type available



Pharmaceuticals & Healthcare

Rooms must be sterile cleaned and when working with chemical or aggressive substances, the devices and machines must be ATEX certified. The GLOBE Compact Vane Motor is available with ATEX certification and can be supplied with a stainless steel housing. This makes them suitable to harsh environments with chemicals.

- Stainless steel housing for corrosive environments with aggressive cleaners.
- ATEX certification for use in explosive proof areas
- Lubrication free means fewer emissions for hygienic and sensitive environments



Food & Beverage

The end product must be safe for consumption. In addition to the high hygiene requirements, the legal food standards must also be met. The GLOBE Compact Vane Motor is available with food graded lubricant or without lubrication. The stainless steel housing ensures a food safe finish.

- Stainless steel housing for clean, food safe surfaces and corrosive free applications.
- Food graded lubrication available or without lubrication at all for fewer emissions.



Cosmetics

Their smooth cylindrical surface has no pockets where dirt can collect. A seal prevents dirt and liquids from entering the motor gears. The seal also prevents the gear lubricant from leaking out. This ensures clean operation meeting cosmetic product requirements

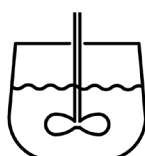
- Stainless steel housing for sterile environments
- Food graded lubrication or lubrication free
- Multiple mounting type available



Oil & Gas

Because of the high amount of explosive or flammable substances, machinery must meet ATEX requirements. The CVM can be used for a number of applications, for example cleaning heat exchangers of pipe beveling.

- ATEX Certification for use in explosive proof areas
- Multiple mounting type available



Mixers

The modular design enables you to choose various output speeds and desired torques. Together with a 100% silicone free motor, they are a perfect fit for industrial mixers.

- Instant and smooth start up
- Silicone free
- Stainless steel housing
- Oil free application
- ATEX Certification



Integrated Gearbox

Choose the perfect gear ratio for your unique application, enabling you to tailor torque and speed for optimal efficiency.



Interchangeability

The many available mounting and flange types make it perfectly interchangeable with current situations. Effortlessly integrates into various applications with a range of optional mounting accessories.



Safe Stalling

Can be loaded until they stall, without damage. Air motors will not overheat or burn out.



Price / Quality

Attractive price-to-performance ratio due to his modular design. Simple and inexpensive variable speed and torque control with a flow control valve and/or pressure regulator.

ATEX



Suitable for the harshest environments. Resistant to warm, dirty and damp conditions. Designed to be able to withstand the toughest heat, vibration, impact etc. Intrinsically safe for explosion proof environments.

High Reliability ★★

Equipped with low-friction vanes and sealed bearings. The design and the low number of moving parts aids reliability. Simple design principle makes them easy to service

Small But Powerful

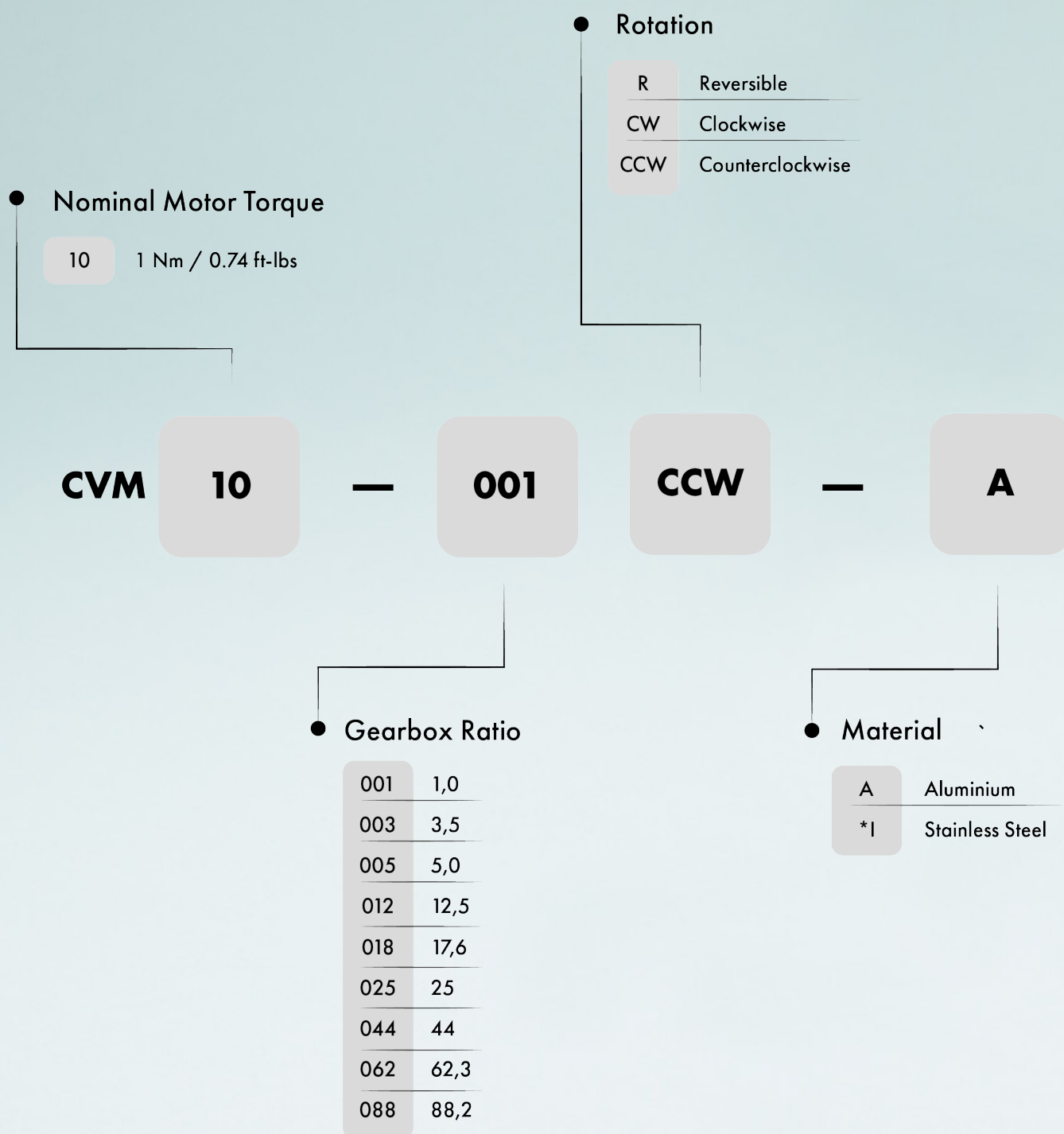


Smaller installation dimensions and lower weight than corresponding electric motors. This light and compact air motor has a high power density.

ORDERING CODE

BUILD YOUR OWN

The CVM10 has a modular design, this enables you to 'build' your own compact vane motor, specifically tailored to the requirements of your application. Change the **material** of the housing, the gearbox **ratio**, the **shaft**, **mounting** or the **lubrication**. Because of our engineering department bespoke, custom solutions are also possible.



COMPACT VANE MOTOR

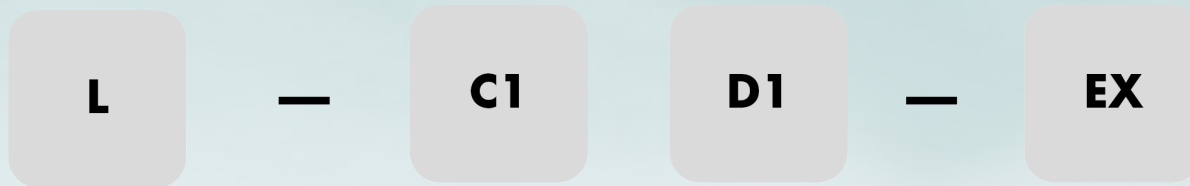
You'll receive your CVM10 ready to go. We deliver it with a silencer specially suited for the CVM10, so it's plug & play. Many are available from stock. The parts marked with an * have a longer lead time depending on the configuration. Contact our specialists for more information.

● Mounting

C1	Standard Flange
*C2	Flange IEC71 B14A / IEC56 B14B
*C3	Flange IEC100 B14A / IEC80 B14B
X1	Face Mount
J1	Foot Mount

● ATEX

	No ATEX
EX	With ATEX Certification



● Lubrication

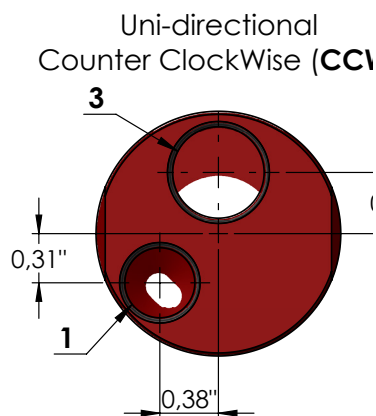
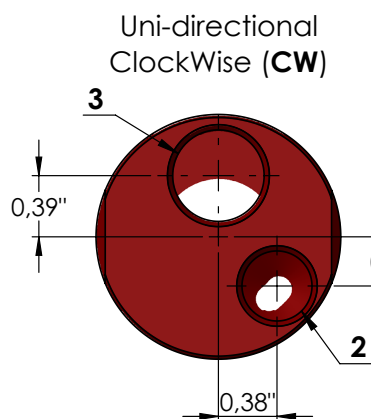
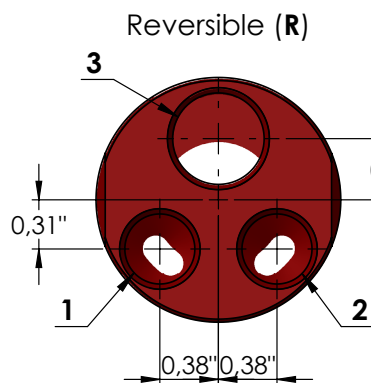
L	Lubricated
N	Non Lubricated

● Shaft

D1	Shaft 10mm
T1	Threaded Shaft 3/8" UNF

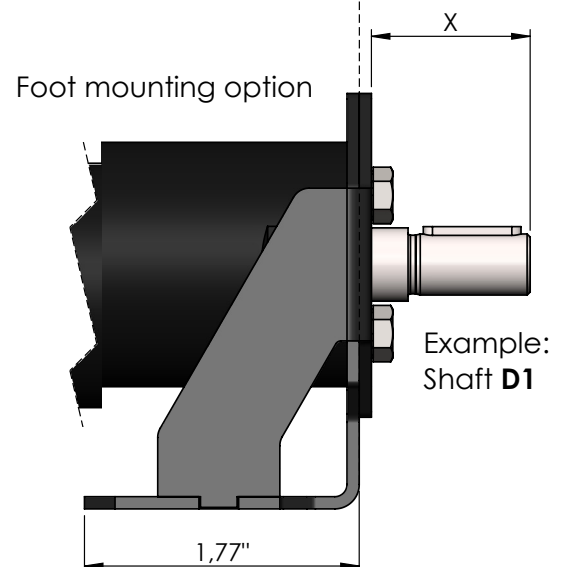
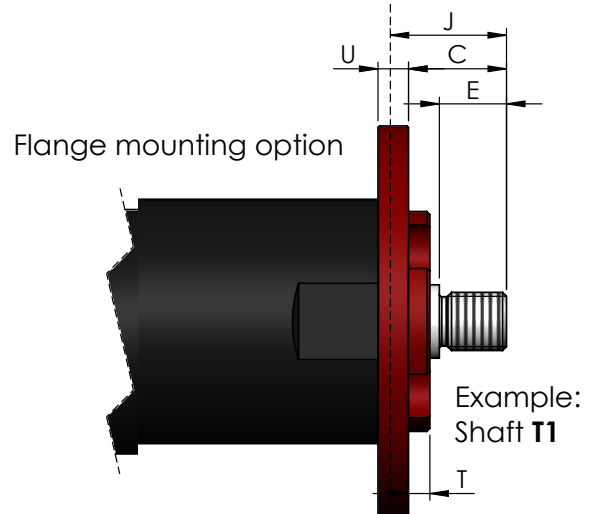
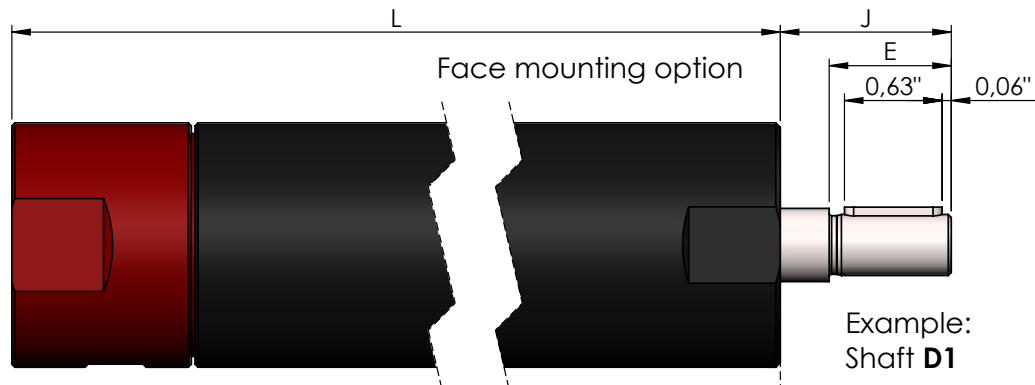
* = not available from stock

DIMENSIONS



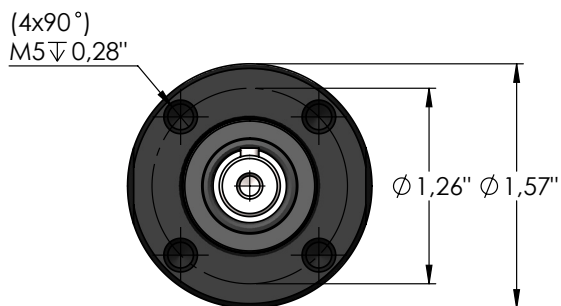
- 1- Inlet port **CCW** rotation
Secondary exhaust por
(G1/4" BSPP)
- 2- Inlet port **CW** rotation /
Secondary exhaust por
(G1/4" BSPP)
- 3- Primary exhaust port
(G3/8" BSPP)

Note: Rotation direction is observed when looking towards the output shaft from the front.

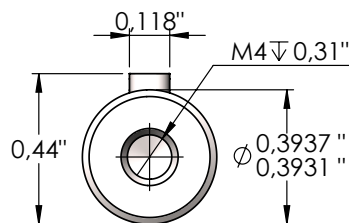


All output shaft and flange or foot mounting combinations available

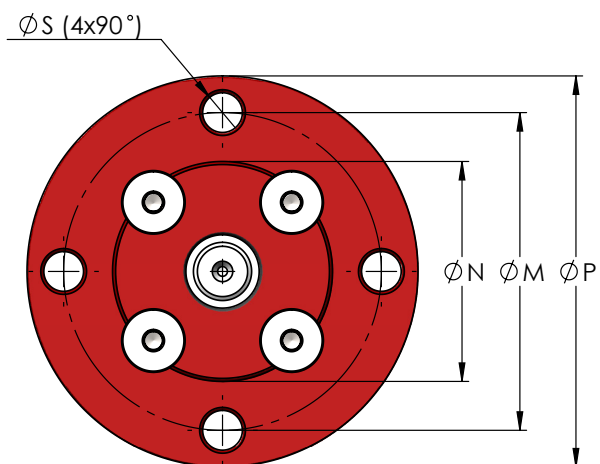
DIMENSIONS



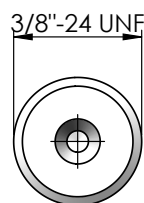
Face mount **X1**



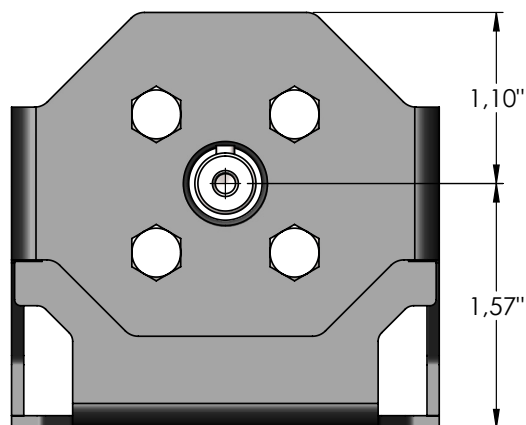
Shaft **D1**



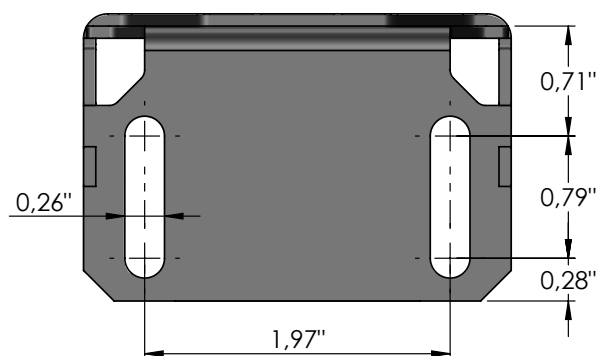
Flange mount **C1 / C2 / C3**



Shaft **T1**



Foot mount **J1**



Model Ratio	L
CVM10-001	~5.18"
CVM10-003	
CVM10-005	
CVM10-012	~6.44"
CVM10-018	
CVM10-025	
CVM10-044	~7.70"
CVM10-062	
CVM10-088	

Flange	N	M	P	T	U
C1	1.4163" 1.4157"	2.05"	2.52"	0.14"	0.20"
C2	2.7547" 2.7540"	3.35"	4.13"	0.14"	0.28"
C3	4.3293" 4.3284"	5.12"	6.30"	0.14"	0.28"
Shaft	C	E	J	X	
D1	0.98"	0.79"	1.10"	1.02"	
T1	0.63"	0.43"	0.75"	0.67"	

SPECIFICATIONS

Model			Max. power [HP]		Torque [lb-ft]*		Speed [RPM]*		Air Consumption [cub. ft/min]*		Min. starting torque [lb-ft]		Free speed [RPM]	
			60 psi	90 psi	60 psi	90 psi	60 psi	90 psi	60 psi	90 psi	60 psi	90 psi	60 psi	90 psi
CVM	10	001R	0.47	0.75	0.18	0.26	13500	14500	23.31	31.78	0.30	0.44	19000	23000
		001CW	0.42	0.71							0.22	0.37	18000	21000
		001CCW												
		003R	0.47	0.74	0.66	0.96	3700	4000	23.31	31.78	0.96	1.55	6000	6750
		003CW	0.40	0.70	0.59	0.89					0.89	1.48	5500	6250
		003CCW												
		005R	0.47	0.74	0.96	1.40	2600	2800	23.31	31.78	1.40	2.29	4250	4750
		005CW	0.40	0.70	0.81	1.33					1.25	1.99	4000	4500
		005CCW												
		012R	0.46	0.72	2.36	3.47	1000	1100	21.19	29.66	3.39	5.46	1600	1900
		012CW	0.40	0.70	2.14	3.32					3.10	5.16	1500	1800
		012CCW												
		018R	0.46	0.72	3.47	4.79	700	800	21.19	29.66	4.87	7.74	1200	1400
		018CW	0.40	0.70	3.02	4.57					4.43	7.38	1100	1300
		018CCW												
		025R	0.46	0.72	4.79	6.93	500	550	21.19	29.66	6.93	11.06	850	1000
		025CW	0.40	0.70	4.28	6.71					6.27	10.47	800	950
		025CCW												
		044R	0.44	0.70	8.11	11.87	285	310	20.13	27.55	12.17	19.18	480	575
		044CW	0.39	0.68	7.23	11.51					10.69	18.44	450	540
		044CCW												
		062R	0.44	0.70	11.73	16.74	200	220	20.13	27.55	16.96	27.29	340	400
		062CW	0.39	0.68	10.33	16.23					15.49	25.81	320	380
		062CCW												
		088R	0.44	0.70	16.60	23.60	140	155	20.13	27.55	24.34	38.35	240	285
		088CW	0.39	0.68	14.75	22.86					22.13	36.88	225	270
		088CCW												

* at max power

PERFORMANCES

Housing material	Ordering Code	
	A:	7075 aircraft grade aluminium alloy
	I:	316 stainless steel
Foot bracket material	Plain Carbon Steel	
Lubrication	Normal:	Kluber
	Food Grade:	Fuchs





GLOBE[®] AIRMOTORS B.V.

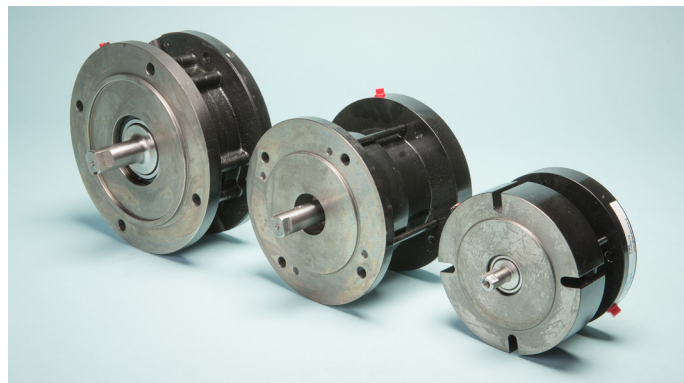
GLOBE Airmotors | Boerhaaveweg 9-11 | NL - 2408 AD Alphen a/d Rijn | Tel +31 172 426 608 | info@globe-benelux.nl

Take a look at our other products

Wide range of products available



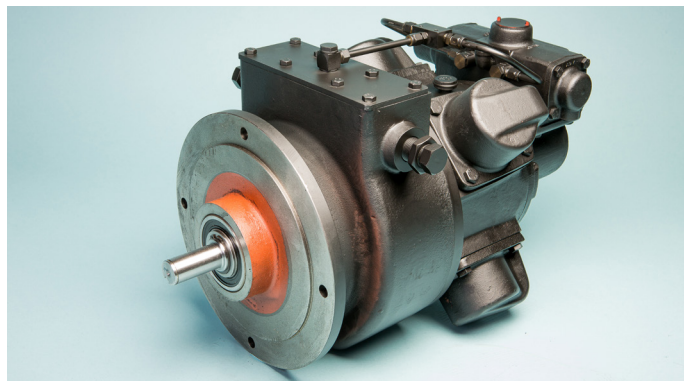
Compact Piston Air Motors



Pneumatic Brakes



Compact Vane Air Motors





Piston Air Motors

This document, as well as the CAD data of the vane air motors are available for download on globe-airmotors.com.

Want to know more?

Please contact us.

 +31 172 426 608

 info@globe-airmotors.com

 [/showcase/globe-airmotors/](https://www.linkedin.com/showcase/globe-airmotors/)

www.globe-airmotors.com